

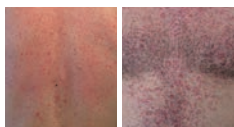
Through training, information and support programs, Avène Dermatological Laboratories are committed to improving the quality of life of oncology patients.

POSSIBLE CUTANEOUS SIDE EFFECTS INDUCED BY CANCER TREATMENTS

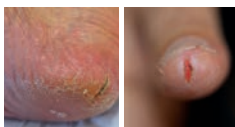
XEROSIS



ACNEIFORM ERUPTIONS



CRACKED SKIN



PARONYCHIA



HAND-FOOT SKIN REACTION



RADIODERMATITIS



KERATOSIS PILARIS



SCARS



MOLECULES RESPONSIBLE

**Chemotherapy**

capecitabine, fluorouracil, hydroxyurea, etc.

**Targeted therapies**

anti-EGFR, anti-MEK: cetuximab, erlotinib, gefitinib, panitumumab, pertuzumab, pertuzumab, afatinib, lapatinib, selumetinib, trametinib

**Hormone therapies**

**Targeted therapies**

anti-EGFR, anti-MEK and less frequently mTOR inhibitors: cetuximab, erlotinib, gefitinib, panitumumab, pertuzumab, afatinib, lapatinib, selumetinib, trametinib, everolimus, temsirolimus.

**Chemotherapy**

capecitabine, fluorouracil.

**Targeted therapies**

anti-EGFR, anti-MEK: cetuximab, erlotinib, gefitinib, panitumumab, pertuzumab, afatinib, lapatinib, selumetinib, trametinib.

**Targeted therapies**

anti-EGFR, anti-MEK and mTOR inhibitors: cetuximab, erlotinib, gefitinib, panitumumab, pertuzumab, afatinib, lapatinib, selumetinib, trametinib, everolimus, temsirolimus.

**Chemotherapy** with taxane, fluorouracil, doxorubicin, methotrexate or capecitabine can induce these effects but much less systematically.

**Chemotherapy**

with taxane, vinca alkaloids, platinum salts, fluorouracil, capecitabine, cytarabine, etc.

**Targeted therapies**

anti-angiogenic and/or RAF inhibitor molecules: regorafenib, sorafenib, sunitinib, pazopanib, vemurafenib, dabrafenib.

**Radiotherapy**

**Chemotherapy**

5-FU, doxorubicine, taxane, cisplatine, etc.

**Targeted therapies**

anti-EGFR: cetuximab+++ , vemurafenib, etc.

**Targeted therapies**

sorafenib, dabrafenib, vemurafenib, regorafenib.

**Targeted surgeries**

Post-thyroidectomy, Post-mastectomy, etc.

DERMO-COSMETIC RECOMMENDATIONS\* IN 3 STEPS: SOOTHE, CLEANSE AND TREAT

1

Thermal Spring Water • Spray

2

and/or Tolérance Extremely gentle cleanser (face + eyes) and/or XeraCalm A.D Ultra-rich cleansing bar (face + body) and/or XeraCalm A.D Lipid-replenishing cleansing oil (face + body)

3

BODY  
**XeraCalm A.D**  
Balm



BODY  
**XeraCalm A.D**  
Balm



BODY  
**XeraCalm A.D**  
Balm



BODY  
**XeraCalm A.D**  
Balm



BODY  
**XeraCalm A.D**  
Balm



FOR PREVENTION  
**XeraCalm A.D**  
Balm



BODY  
**XeraCalm A.D**  
Balm



**Cicalfate+**  
Scar gel



LIPS  
**Cicalfate Lips**  
Balm



FACE  
Sunscreen  
**SPF50+**



**Cicalfate+**  
Cream



**Cicalfate+**  
Cream



**Cicalfate+**  
Cream



OZZING  
RADIO-EPITHELITIS  
**Cicalfate+**  
Spray



CARE  
**XeraCalm A.D**  
Soothing  
concentrate



**Cicalfate+**  
Cream



**Cicalfate Hand**  
Hand cream



**Cicalfate Hand**  
Hand cream



**Cicalfate Hand**  
Hand cream



AS FOLLOW-UP  
**Cicalfate+**  
Cream



Thanks to Avène's unique dermo-cosmetic expertise, relief from cutaneous side effects is possible.

GUARANTEED  
EFFICACY  
AND SAFETY



Only the beneficial ingredients that are useful to the skin

Exclusive protective packaging

Preservative-free



Recommended by dermatologists worldwide.

RESPECTS SKIN MICROBIOME

DERMO-COSMETIC RECOMMENDATIONS

SOOTHING WATER



Thermal Spring Water  
SPRAY

FACE • BODY

• Avène Thermal Spring Water

Allows your patient to enjoy the benefits of Avène Thermal Spring Water every day.

REDUCED SKIN SENSITIVITY<sup>(1)</sup>

**-30%**  
after 5 minutes

**-64%**  
during the 1<sup>st</sup> week

*In more severe cases<sup>(2)</sup>*

Apply compresses soaked in Avène Thermal Spring Water for **10 to 15 minutes** on the areas to be soothed.

For every bottle sold: \$1\*\*

IN SUPPORT OF (4)



Canadian Cancer Society



Recognized Skin Health  
Canadian Dermatology Association



HYGIENE



**NEW**  
XeraCalm A.D.  
LIPID-REPLENISHING CLEANSING OIL  
FACE • BODY

Gently cleanses and alleviates the feeling of discomfort of the external mucosa<sup>(4)</sup>. High ocular and gynecologic tolerance.

- Avène Thermal Spring Water: 78%
- I-modulia®: 0.4%
- Lipid phase: 7%
- Soft cleansing base: 14%
- Preservative: Sorbic acid



XeraCalm A.D.  
ULTRA-RICH CLEANSING BAR  
FACE • BODY

Gently cleanses.

- I-modulia®: 0.4%
- Avène Thermal Spring Water: 1%
- Phase lipidique: 9.8%



Tolérance  
EXTREMELY GENTLE CLEANSER  
FACE • EYES • LIPS

Cleanses, removes make-up and soothes.

- Avène Thermal Spring Water: 79%
- Glycerin: 5%
- Lipid phase: 15%

SKIN CARE  
Face & body



Tolérance  
CONTROL CREAM  
FACE

Calms and controls skin hyper-reactivity. Restores the skin barrier. 24h hydration. Balm version available.

- D-Sensinose™ 1%: reduces skin sensitivity, calms & restores the barrier
- Avène Thermal Spring Water 65.2%: soothing, softening and refreshing



XeraCalm A.D.  
LIPID-REPLENISHING BALM  
FACE

Nourishes and soothes pruritic sensations<sup>(3)</sup>.

Also available in 200ml and in cream version.

- I-modulia® 0.4% (biotechnological active ingredient extracted from *Aquaphilus Dolomiaea*, found exclusively in Avène's Thermal Spring Water): calms the reactivity, redness and pruritus<sup>(3)</sup>
- Cer-Omega 2.3%: regenerates the cutaneous barrier
- Avène Thermal Spring Water 56%: soothing, softening and refreshing



Cicalfate  
LIPS  
RESTORATIVE BALM  
LIPS

Nourishes and repairs. Water and saliva resistant for up to 6 hours.

- Sucralfate 1%: protects skin during the skin recovery process
- Copper Sulfate 0.1% + Zinc Sulfate 1%: purifying and protective agents



Cicalfate  
HANDS  
RESTORATIVE BARRIER CREAM  
HANDS

Nourishes and repairs. Helps to restore, soothe and protect very dry and fragile hands.

- S • Sucralfate 1%: protects skin during the skin recovery process
- Copper Sulfate 0.1% + Zinc Sulfate 1%: prevents bacterial adhesion



Cicalfate+  
RESTORATIVE PROTECTIVE CREAM  
FACE • BODY

Helps soothe superficial irritations.

- [C+Restore]™ 1% (biotechnological active ingredient post-biotic): protects skin during the skin recovery process
- Copper Sulfate 0.2% + Zinc Sulfate 0.1%: sanitizes and deeply purifies

SCAR GEL  
FACE • BODY

Improves scar's appearance. Pro-massage texture. Scars, post-surgery.



Cicalfate+  
ABSORBING SOOTHING SPRAY  
FACE • BODY

Irritations subject to maceration.

- [C+Restore]™ 1% (biotechnological active ingredient post-biotic): protects skin during the skin recovery process
- Hydrogenated starch hydrolysate 2.8%: actif asséchant
- Copper Sulfate 0.25% + Zinc Sulfate 0.25% + Zinc Oxide 6%: sanitizes and deeply purifies

- Silicone 25%: effectively shapes appearance of scar
- [C+Restore]™ 1% (biotechnological active ingredient post-biotic): protects skin during the skin recovery process
- Copper Sulfate 0.2% + Zinc Sulfate 0.1%: sanitizes and purifies



100% mineral  
SUN PROTECTION

CHEMICAL FILTERS  
FRAGRANCE  
PARABEN  
**FREE**  
NON COMEDOGENIC

VERY HIGH PROTECTION

MINERAL CREAM  
SPF50+  
FACE

Certified (UVA).  
Safe white sunblock.



MINERAL LOTION  
SPF50+  
FACE • BODY

100ml large format.  
Safe white sunblock.

- Titanium dioxide 100% mineral: photoprotector complex
- Pre-tocopheryl®: antioxidant

MINERAL FLUID  
SPF50+  
FACE

Certified (UVA).  
Light texture.



VERY HIGH PROTECTION  
TINTED MINERAL FLUID  
SPF50+  
FACE

Certified (UVA).  
Light golden texture.

- Titanium dioxide 11.85% + Zinc oxide 14.7%: 100% mineral photoprotector complex
- Pre-tocopheryl®: antioxidant
- Iron Oxide: blue light protection

\* Nielson Canada, Market Datas, by segment, value sales and volume, ending January 1<sup>st</sup>, 2022. / \*\* To reach our contribution of \$15,000 in 2022. / (1) Dermatological study carried out on 6,368 subjects with sensitive skin. Simple, non-pathological sensitive skin with inflammatory dermatosis or following a superficial dermatological procedure. Evaluation over 7 days, with an application twice/day. Application of spray alone or in combination with drug-based treatments and/or other cosmetic products. / (2) Dryness or irritations resulting from radiotherapy, redness, skin rashes, itchiness due to dry skin. / (3) Caused by skin dryness. / (4) For the purchase of a 300ml bottle, \$1 will be donated to the CCS, for a total contribution of \$15,000 in 2022.